

PREE Laboratories - South  
545 SW 2nd St, #202, Corvallis, OR 97333  
541-257-5002 / OLCC 010-10087092BDA / www.PREElab.com

**California Craft CBD Salve**  
*SunGold Botanicals*  
(Info Only)

Confident Cannabis ID: 2404PREE0574.2515

Sample ID: C240621-01

Matrix: Cannabinoid Product (solid)

METRC Batch #:

Sampling Method/SOP: FSOP #101

Date Sampled: NA

Date Accepted: 04/16/24

Harvest/Process Lot ID: NA

Batch ID: NA

Batch Size (g):

Unit for Sale:

Harvest/Production Date:

**Cannabinoid Analysis**

FOR INFORMATIONAL USE ONLY - NOT FOR REGULATORY PURPOSES

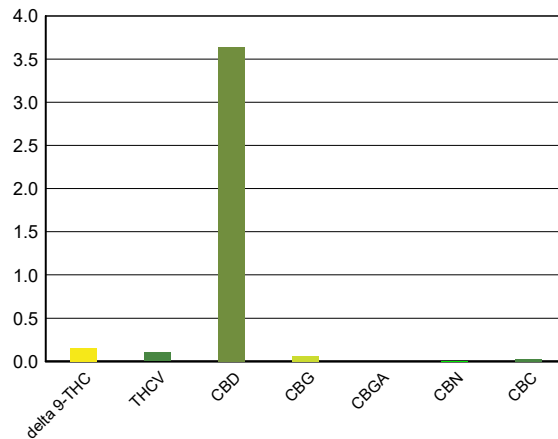
Date/Time Extracted: 04/18/24 10:00

Analysis Method/SOP: LSOP #303

Date/Time Analyzed: 04/18/24 17:42

| Cannabinoids                          | LOQ(%) | mg/g         | % weight     | Cannabinoid Profile |
|---------------------------------------|--------|--------------|--------------|---------------------|
| <b>Total THC</b> ((THCA*0.877)+Δ9THC) |        | <b>1.53</b>  | <b>0.153</b> |                     |
| <b>Total CBD</b> ((CBDA*0.877)+CBD)   |        | <b>36.40</b> | <b>3.640</b> |                     |


|                               |       |       |       |
|-------------------------------|-------|-------|-------|
| THCA                          | 0.010 | < LOQ | < LOQ |
| delta 9-THC                   | 0.010 | 1.53  | 0.153 |
| delta 8-THC                   | 0.010 | < LOQ | < LOQ |
| THCV                          | 0.010 | 1.03  | 0.103 |
| CBGA                          | 0.010 | < LOQ | < LOQ |
| CBDA                          | 0.010 | < LOQ | < LOQ |
| CBD                           | 0.010 | 36.40 | 3.64  |
| CBDV                          | 0.010 | < LOQ | < LOQ |
| CBN                           | 0.010 | < LOQ | < LOQ |
| CBG                           | 0.010 | 0.65  | 0.065 |
| CBC                           | 0.010 | 0.28  | 0.028 |
| CBDV-A                        | 0.010 | < LOQ | < LOQ |
| CBL                           | 0.010 | < LOQ | < LOQ |
| Sum of tested<br>Cannabinoids | 0.010 | 39.90 | 3.99  |



"Total THC" and "Total CBD" are calculated values and are an Oregon reporting requirement (OAR 333-064-0100). For Cannabinoid analysis, only delta 9-THC, delta 8-THC, THCA, CBD and CBDA are ORELAP accredited analytes. Cannabinoid values reported for plant matter are dry weight corrected; Oregon Water Activity action level is 0.65Aw and Oregon Moisture Content action level is 15%. Samples above limit will be highlighted RED; FD = Field Duplicate; LOQ = Limit of Quantitation.

Carson Newkirk  
Laboratory Manager - 4/23/2024

**PREE Laboratories - South**  
**545 SW 2nd St, #202, Corvallis, OR 97333**  
**541-257-5002 / OLCC 010-10087092BDA / www.PREElab.com**



**Carson Newkirk**  
**Laboratory Manager - 4/23/2024**

Page 2 of 2